



SANDRINGHAM

SANDBANKS



// VAN MORRISON

SMELL THE SEA  
AND FEEL THE SKY.  
LET YOUR SOUL  
AND SPIRIT FLY.





An exterior CGI of Sunderland, Catalina and Sandringham.

Computer generated images and photography are intended for illustrative purposes only and should be treated as general guidance only.



# STEP INTO YOUR FUTURE.

Fortitudo brings you Sandringham, Catalina and Sunderland, an elite development of three four-bedroom, luxury homes in Lilliput, overlooking the waters of glorious Poole Harbour, alongside the globally-renowned Sandbanks Peninsula, Poole.

Combining extraordinary design and quality with an unsurpassed location, this is the pinnacle of lavish waterside living.

It's time to discover a better life.







RAF Short Sunderland flying boat,  
in service with 230 Squadron from  
December 1942 until March 1945.



# A NAME, A HISTORY, AN IDENTITY

Sandringham, Catalina and Sunderland are named after three majestic flying boats which would once have been moored in the harbour waters in view of this location.

For a few years during and after World War II, Poole Harbour was the worldwide centre for flying boat travel. Here VIP travellers, including Hollywood stars, Royalty, and the political elite, took flight from the water to journey in opulent luxury to Europe, Africa and Australia.

Many even consider Poole the birthplace of British Airways, its forerunner the British Overseas Airways Corporation having been established during its time based in the harbour.

During the war, it was also a base for dozens of military seaplanes. The brave crews must have felt their spirits surge when they saw that familiar sweep of the harbour on their return from missions, as their impressive craft captured the imaginations of those watching from below.

As we bring a small piece of that history to life, we invite you to let your imagination take flight and allow that same sense of homecoming joy to be yours.







Aerial view of Poole Harbour and Brownsea Island and Salterns Marina (right hand side).

# LOCATION IS EVERYTHING

Sitting alongside prestigious Salterns Marina and overlooking the expansive blue waters of Poole Harbour, this location has it all.

The area, which includes globally-renowned Sandbanks, is one of the most sought-after and exclusive places to live in the world – for good reason. It boasts every possible advantage, from its striking natural features to its offer of fine dining and leisure pursuits. The superior lifestyle on offer is second to none.

To the outside world it has become synonymous with prestige, extravagance, and some of the most expensive real estate in the world, but for those fortunate enough to call it home this select community is a safe haven, where even the most high-profile and influential figures can come to escape life's pressures and unwind with family and friends.

Lilliput itself, where Sandringham, Catalina and Sunderland are situated, offers a relaxed 'coastal village' vibe, with a handful of high-end eateries and shops, and of course Salterns Marina, an important part of Sandbanks and Poole Harbour history for more than 200 years. Here you will find a yacht brokerage, bespoke boat services, and exclusive private berthing, offering outstanding access to the harbour and some of the most beautiful coastlines in the UK.

As well as the vibrant community and strong sailing heritage, Lilliput is most notable for its incredible location overlooking the stunning Sandbanks peninsula and the sweeping curve of the harbour, all of which opens before you as you descend Evening Hill, a famed beauty spot on your doorstep.





"SALTERNS MARINA HAS BEEN AN IMPORTANT PART OF SANDBANKS AND POOLE HARBOUR HISTORY FOR MORE THAN 200 YEARS.

Aerial view of the prestigious Salterns Marina which overlooks the expansive blue waters of Poole Harbour.







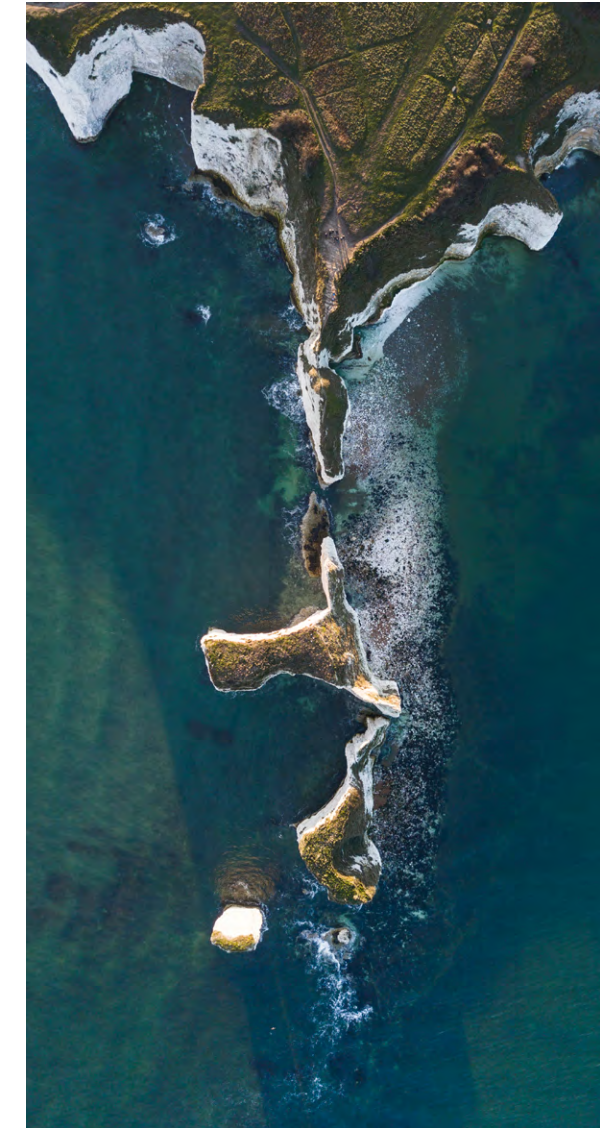
Sunset at Durdle Door  
along the Jurassic Coast.

# A NATURAL PARADISE



Above: Golden sandy beaches  
stretching down to Sandbanks.

Right: Aerial views of Old Harry Rocks  
and the chalk Purbeck coastline.



Every element to create a dream life is here. Near the top of that list is glorious Sandbanks Beach, one of the UK's finest, whose golden sands provide endless opportunities for relaxation and fun, whether you prefer tranquil winter walks or the high-octane thrill of the annual beach polo festival.

A stone's throw across the water is treasured nature-haven Brownsea Island, flanked by Studland and the rolling Purbeck Hills, with the stunning Jurassic Coast and its iconic views within easy reach further west, while to the east lies the idyllic New Forest.

The great outdoors awaits.





Kitesurfing in Sandbanks bay



Left: The idyllic location of Shell Bay Restaurant.

Below: The Boatyard Café &amp; Bar at Sandbanks Yacht Co.

Bottom: Get your adrenaline fix at The Watersports Academy in Sandbanks



# ON THE WATER

Every water sport imaginable is practised here, with paddleboarding, wakeboarding, kitesurfing, jet-skiing, and foiling among the top choices for an adrenaline fix and test of athleticism.

The close proximity to Salterns Marina and Sandbanks Yacht Club means a thriving boating and sailing community is also on your doorstep. Whether you fancy some sea fishing, a jaunt over the Solent to the Isle of Wight, or just a hop across the harbour to Shell Bay Restaurant, a favourite with local boat owners, a world of experiences will open up before you.









Experience mouth-watering fresh local produce at Shell Bay Restaurant.



Views over the bay at Rick Stein Restaurant.



# THE FINER THINGS IN LIFE



Top: The Pig on the beach at Studland. Bottom: Rick Stein Sandbanks.



Grab your morning coffee at Patisserie Mark Bennett.



As befits its thriving, affluent community, this area boasts first-class amenities.

Less than five minutes' walk from your new home is Patisserie Mark Bennett, perfect for fresh bread, sensational cakes or your morning coffee and croissant. Head to fashionable Ashley Cross for cocktails, or nearby Canford Cliffs, a picturesque village with a range of facilities, such as Neapolitan pizzeria Baffi and glamorous HNB Hair and Beauty salon.

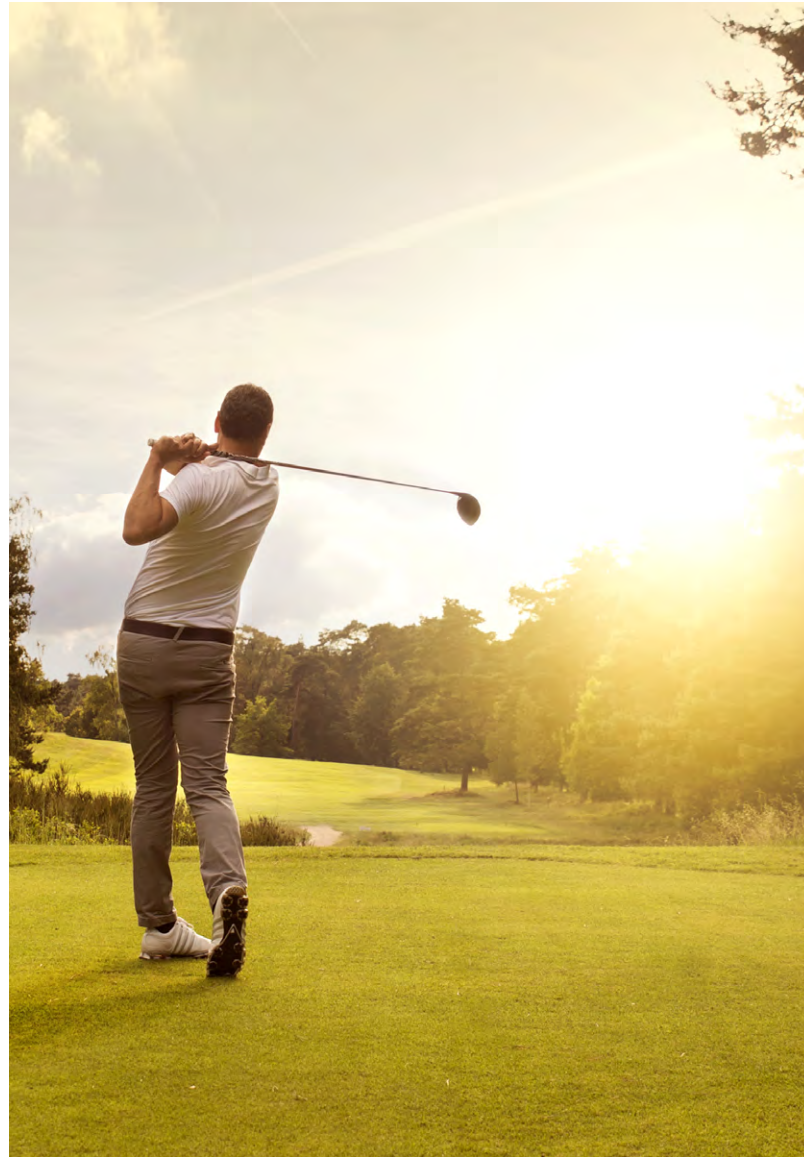
Foodies won't want to miss Rick Stein a short stroll away, or The Pig on the Beach at Studland, often booked months in advance, but always well worth the wait. And making waves on the social scene most recently is The Nici – a five star Miami Beach inspired hotel which opened in June 2022 on Bournemouth's West Cliff, following a £25million refurbishment of what was previously The Savoy Hotel.

...





# ...THE FINER THINGS IN LIFE



Parkstone Golf Club and West Hants Tennis Club are only a short distance from your new home. If deep recharge and restoration are what's needed, world-class spas are a short drive away, including Chewton Glen Hotel and Spa and Christchurch Harbour Hotel.



HarSPA at Christchurch Harbour Hotel

Fireworks at Bournemouth Pier, just one of many regular local events.



Sporting settings also abound, with Parkstone Golf Club a few minutes away, and the historic West Hants Club, an internationally acclaimed centre of excellence for tennis, in nearby Bournemouth. Or, if deep recharge and restoration are what's needed, world-class spas are a short drive away, including Chewton Glen Hotel and Spa and Christchurch Harbour Hotel with its extensive HarSPA.

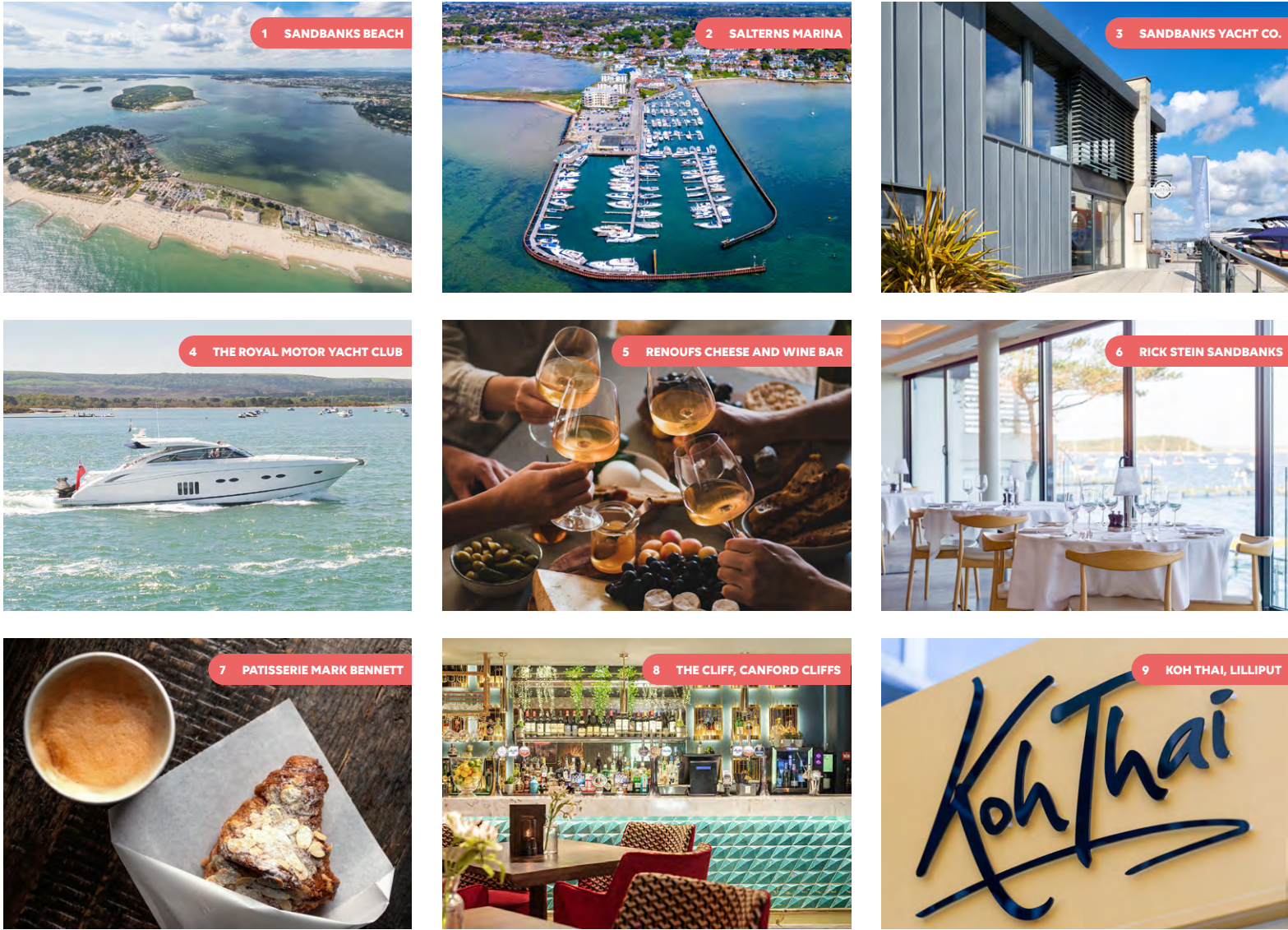
Those craving culture will not be disappointed either thanks to the eclectic range of exhibitions and performances on offer at Lighthouse, Poole, the Bournemouth International Centre or Bournemouth's Pavilion Theatre, alongside a rolling calendar of local festivals and events.

Whatever your passions, your pace of life, or your aspirations, this unmatched location offers all you need to shape the life you want – fresh sensations, sights, experiences, and opportunities are waiting to be unlocked. You need only turn the key on your new home.





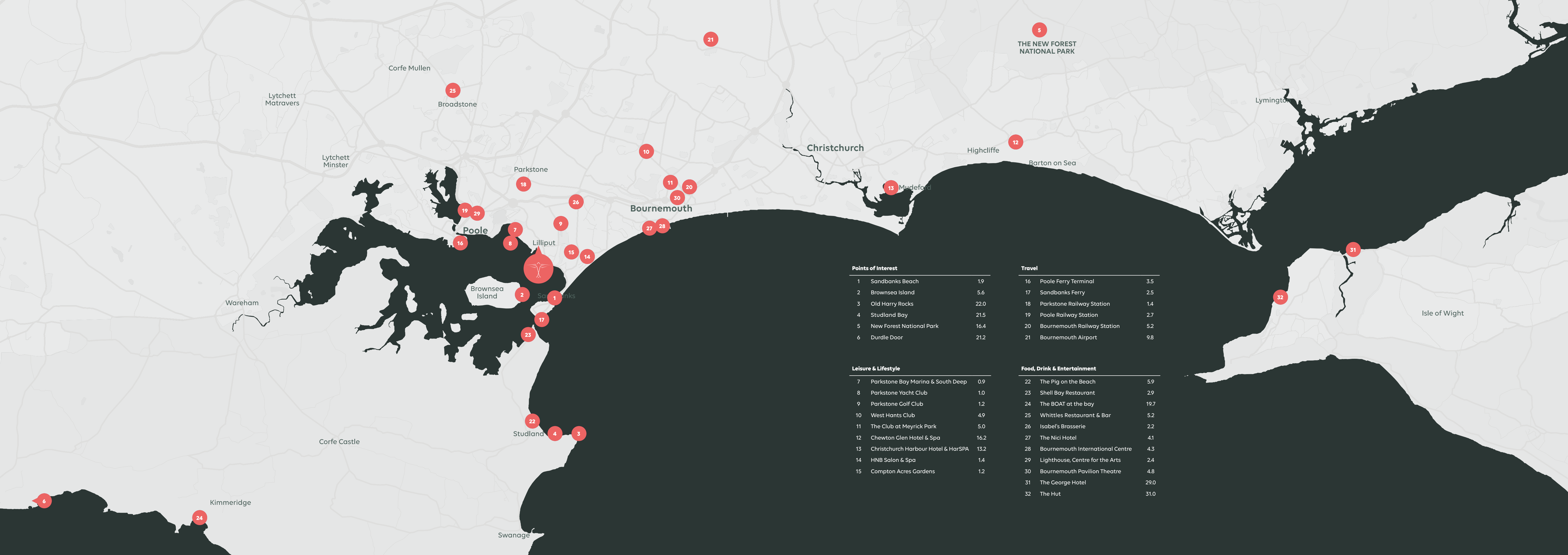
# ON YOUR DOORSTEP



ON YOUR DOORSTEP...







Points of Interest

1	Sandbanks Beach	1.9
2	Brownsea Island	5.6
3	Old Harry Rocks	22.0
4	Studland Bay	21.5
5	New Forest National Park	16.4
6	Durdle Door	21.2

Leisure & Lifestyle

7	Parkstone Bay Marina & South Deep	0.9
8	Parkstone Yacht Club	1.0
9	Parkstone Golf Club	1.2
10	West Hants Club	4.9
11	The Club at Meyrick Park	5.0
12	Chewton Glen Hotel & Spa	16.2
13	Christchurch Harbour Hotel & HarSPA	13.2
14	HNB Salon & Spa	1.4
15	Compton Acres Gardens	1.2

Travel

16	Poole Ferry Terminal	3.5
17	Sandbanks Ferry	2.5
18	Parkstone Railway Station	1.4
19	Poole Railway Station	2.7
20	Bournemouth Railway Station	5.2
21	Bournemouth Airport	9.8

Food, Drink & Entertainment

22	The Pig on the Beach	5.9
23	Shell Bay Restaurant	2.9
24	The BOAT at the bay	19.7
25	Whittles Restaurant & Bar	5.2
26	Isabel's Brasserie	2.2
27	The Nici Hotel	4.1
28	Bournemouth International Centre	4.3
29	Lighthouse, Centre for the Arts	2.4
30	Bournemouth Pavilion Theatre	4.8
31	The George Hotel	29.0
32	The Hut	31.0



# YOU BRING THE DREAM, WE CREATE THE REALITY

This portfolio delivers big, but on an exclusive scale, with just three exceptional four-bedroom homes built right on the waterfront, offering inspirational views across the marina and Poole Harbour beyond.

Close to amenities but in a tucked-away spot with no through traffic - except of course the sailboats gliding by - this intensely desirable location has been elevated to its highest potential with the vision and creativity of the experienced Fortitudo team.

Sandringham, Catalina and Sunderland embody luxury, capture light, and create magical moments,

with their smart layouts, sleek design, and meticulous attention to detail.

Every feature, be it the expansive windows, generous terraces, or super high-spec interiors, comes together to create the incredible home you deserve; it's everything you've worked for and dreamt of - and more.

Computer generated images and photography are intended for illustrative purposes only and should be treated as general guidance only.



The private terrace on the second floor.







Aerial view of Sunderland, Catalina and Sandringham.

Computer generated images and photography are intended for illustrative purposes only and should be treated as general guidance only.



An exterior CGI of Sunderland, Catalina and Sandringham.







The kitchen / breakfast room on the ground floor.

Computer generated images and photography are intended for illustrative purposes only and should be treated as general guidance only.





The living room situated on the ground floor.



Computer generated images and photography are intended for illustrative purposes only and should be treated as general guidance only.







Looking through the kitchen / breakfast room to the living room and garden beyond.



The living room situated on the ground floor.

Computer generated images and photography are intended for illustrative purposes only and should be treated as general guidance only.



The living room.



The entrance hallway.



# SANDRINGHAM GROUND FLOOR

Climb the steps up to an extensive side terrace and open the door to your new world.

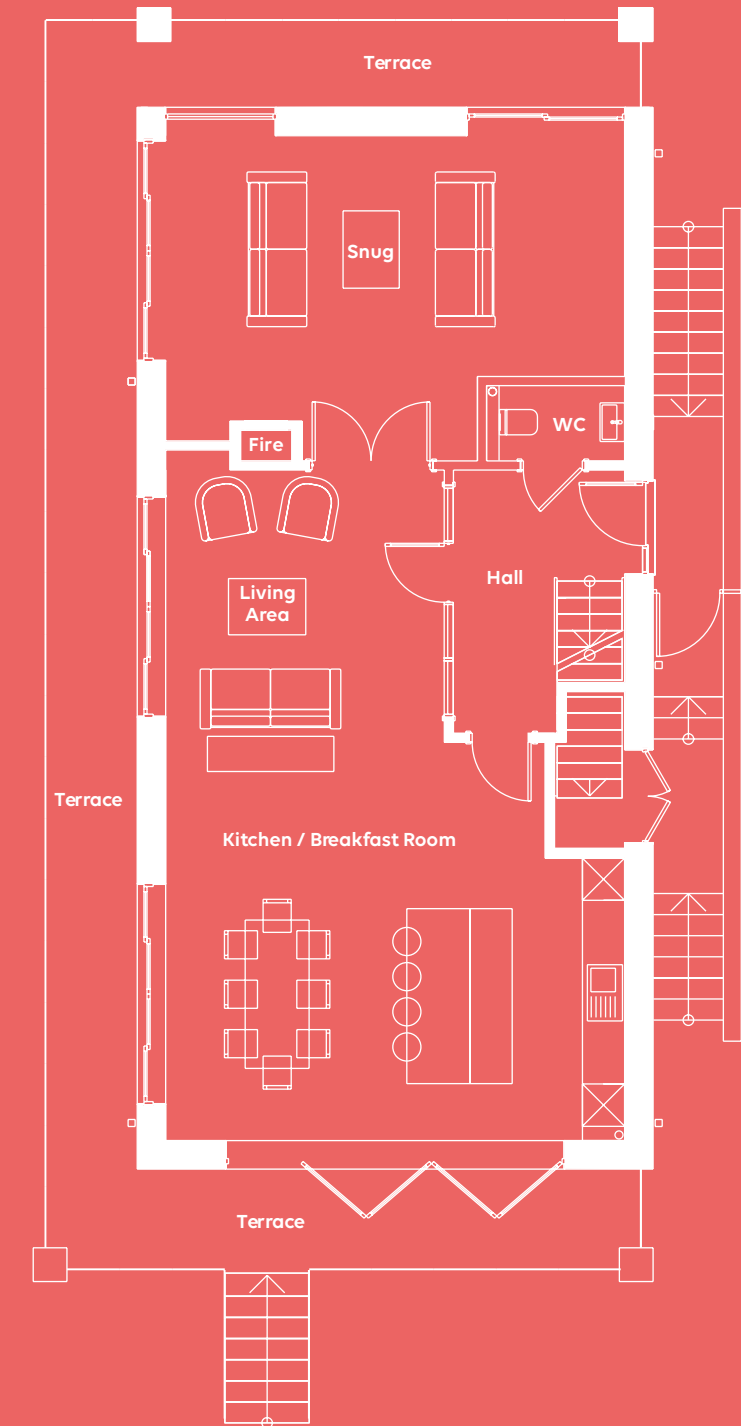
You enter onto a large hallway, with access to a cloakroom, the main stairs, and doors out to a side terrace and the garden beyond.

From here two wide doors open out onto different parts of the expansive kitchen, dining and living room. Light floods the space from two sets of sliding glass doors out onto the westerly side of the wraparound terrace, and bi-fold doors stretching almost the width of the room, which lead to the south facing rear terrace. From here, a short flight of steps takes you down to an attractive private garden area, planted with sea-air hardy trees and shrubs.

The bespoke kitchen, from its opulent polished quartz surfaces to the luxury Gaggenau appliances, offers sleek and beautiful functionality. Here, clever design features, high-end gadgets and quality materials make it an effortless pleasure to use, whether you're pulling a quick espresso or taking your time over an elaborate supper.

There is an abundance of space to create discrete zones, so you can design a room to fit the many ways in which you'll want to spend your time here. A large kitchen island provides preparation space and informal seating, while the dining area easily accommodates a generous table for eight, still leaving ample floor space to mill and mingle over cocktails or coffee with friends. There is also a sizable living area – an elegant addition to the impressive entertaining space.

Beyond this, step through broad feature doors into the cosy family snug, dual aspect and flooded with light, with sliding doors out onto the front terrace.



**Kitchen / Breakfast Room**  
21'5" x 15'3" (6.55m x 4.66m)

**Living Area**  
15'6" x 13'1" (4.75m x 4.00m)

**Snug**  
21'5" x 15'6" (6.55m x 4.75m)

The property and development specifications, particulars, descriptions, artistic impressions, photographs, floor plans, configurations, layouts, maps and any other details are for general guidance only and are subject to change without notice.

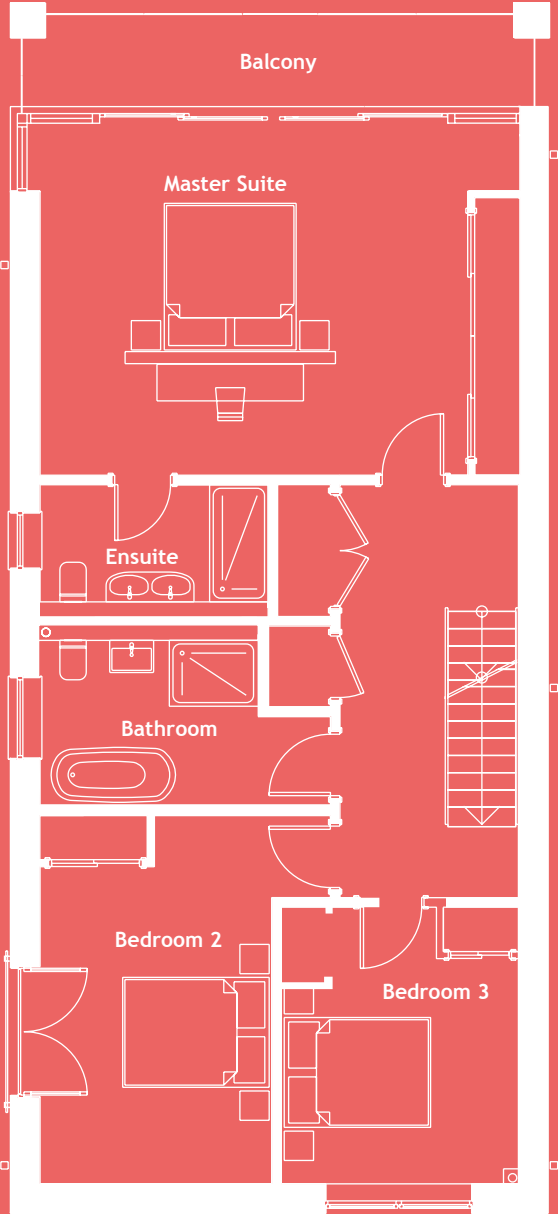


# SANDRINGHAM FIRST FLOOR

Ascend to a wide landing, well-equipped with large storage cupboards, to find three individualised double bedrooms, one with ensuite, and a further bathroom, beautifully appointed by Porcelanosa with a unique ‘egg-shaped’ bath and sumptuous rain effect shower.

Light pervades every element of the impressive master suite to the front of the property, with a wall of glass and doors leading onto a balcony, where you can step out into the sea-fresh air. Built in wardrobes cover one wall, and the lavish ensuite has his and hers sinks and a roomy double shower.

The property and development specifications, particulars, descriptions, artistic impressions, photographs, floor plans, configurations, layouts, maps and any other details are for general guidance only and are subject to change without notice.



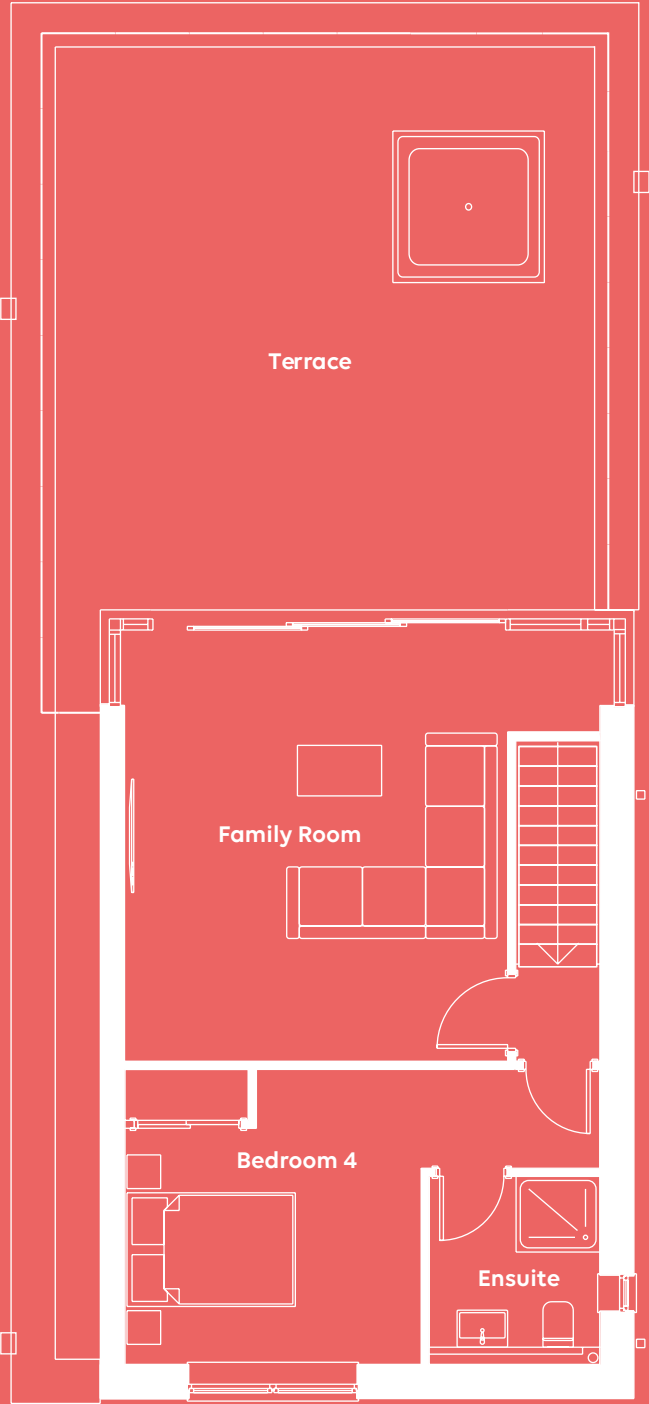
<b>Master Suite</b> 21'5" x 15'3" (6.55m x 4.65m)	<b>Bedroom 2</b> 15'6" x 10'5" (4.75m x 3.20m)	<b>Bathroom</b> 10'7" x 9'8" (3.00m x 2.45m)
<b>Ensuite</b> 10'3" x 6'4" (3.15m x 1.95m)	<b>Bedroom 3</b> 11'5" x 11'3" (3.51m x 3.27m)	



# SANDRINGHAM SECOND FLOOR

At the very top discover a slice of coastal heaven. A sunny family room opens out onto a truly special rooftop garden, a private idyll where you can watch the boats go by, or simply lie back, soak up the rays and listen to the hushing waves. A fourth double bedroom with ensuite shower room completes the floor.

The property and development specifications, particulars, descriptions, artistic impressions, photographs, floor plans, configurations, layouts, maps and any other details are for general guidance only and are subject to change without notice.



<b>Family Room</b> 16'5" x 15'5" (5.02m x 4.73m)	<b>Bedroom 4</b> 11'9" x 11'5" (3.62m x 3.53m)
<b>Terrace</b> 22'1" x 21'0" (6.75m x 6.40m)	<b>Ensuite</b> 7'4" x 6'7" (2.25m x 2.05m)



# IT'S ALL IN THE DETAILS

## House

- Three-storey architect-designed home benefiting from a terrace/balcony on every floor, including south-east facing rear terrace, second floor balcony and rooftop garden.
- Prime waterside location on no-through-road
- Stunning views over Poole Harbour and towards Brownsea Island
- Freehold
- Parking
- Private south-east facing garden
- Lightwave Smart Home package
- Intelligent underfloor heating throughout

## Kitchens

- Suite of Gaggenau appliances comprising:
  - Combination microwave oven
  - Oven
  - Integrated dishwasher
  - Full height fridge
  - Full height freezer
  - Flex induction hob
- Siemens built under wine cabinet
- Waste disposal unit
- Mirrored splashback
- 20mm quartz countertops with waterfall ends to island

## Utility

- Gaggenau washing machine
- Gaggenau heat pump dryer

## Bathrooms

- Beautifully appointed by Porcelanosa, comprising:
  - Concealed flush WC
  - 'Egg-shaped' bath
  - Rain effect shower
  - 'His and hers' basins (ensuites only)
  - Large format Porcelanosa tiles
- Tailored shelving, alcoves and vanity units
- Artforma smart mirror

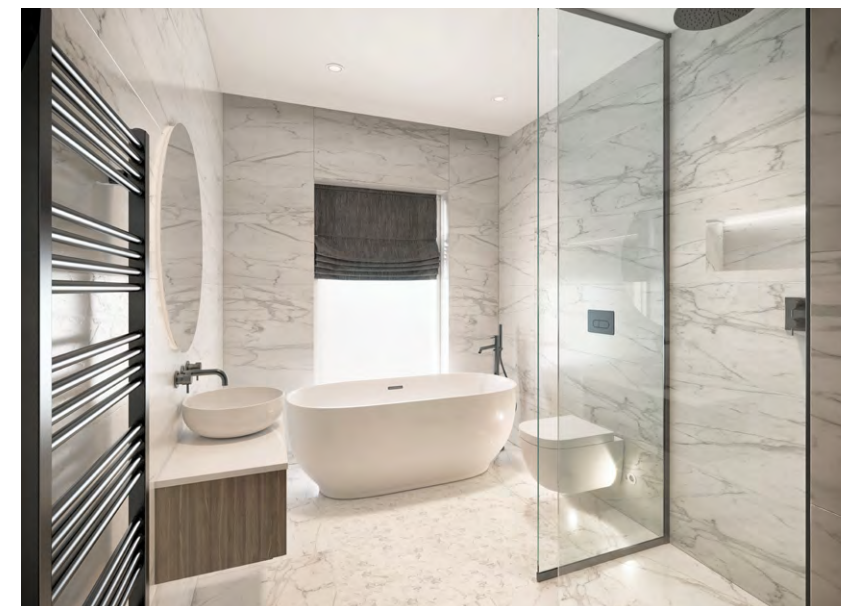
## Living

- Plush exquisite carpets
- Porcelanosa wood effect tile floor laid in herringbone format with feature border
- Electric two sided tunnel feature fireplace
- Integrated Sky Q access
- Up to 100mb ultrafast broadband

## Optional Extras

- Sonos sound system

The property and development specifications, particulars, descriptions, artistic impressions, photographs, floor plans, configurations, layouts, maps and any other details are for general guidance only and are subject to change without notice.



The bathroom on the first floor.



The ensuite of bedroom 4 on the second floor.

Computer generated images and photography are intended for illustrative purposes only and should be treated as general guidance only.







The impressive master suite.

Computer generated images and photography are intended for illustrative purposes only and should be treated as general guidance only.







The impressive master suite.







Bedroom 2 on the first floor.



Bedroom 4 on the second floor.







Computer generated images and photography are intended for illustrative purposes only and should be treated as general guidance only.





# INTRODUCING THE CREATORS

## fortitudo

From a foundation of integrity, knowledge, and creativity, Fortitudo has spent the last 35-years building an enviable reputation as a developer of dream properties – and dream lifestyles.

Bringing together the very best in design and construction with the finest locations, Fortitudo's aim is to create nothing less than perfection. By seeing every project as unique, and responding to its individual requirements and context, they craft bespoke solutions to deliver exceptional results.

Fortitudo developments are always properties of distinction, in synergy with their surroundings, and truly life-enhancing for those that call them home.

Let Fortitudo help you launch the next chapter of your life – it's going to be the best yet.



Computer generated images and photography are intended for illustrative purposes only and should be treated as general guidance only.





TAKE ME TO THE  
OCEAN. LET ME  
SAIL THE OPEN  
SEA. TO BREATHE  
THE WARM  
AND SALTY AIR  
AND DREAM OF  
THINGS TO BE.

// ERICA BILLUPS









fortitudo